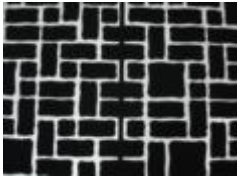


Plastic adhesive-backed templates/stencils available in Single Pattern, 250 sq. ft. rolls and 500 sq. ft. rolls.

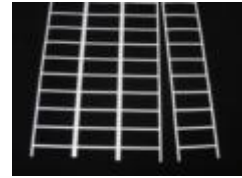
Plastic non-adhesive (bare) templates/stencils available in 500 sq. ft. rolls & 1,000 sq. ft. rolls.



UT-1 / Cobblestone / Stones - Irregular (3 1/2" to 8" x 8")
Grout - Irregular (1/2" to 1")



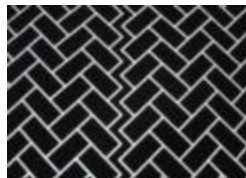
UT-2 / Runningbond / Brick - 3 1/2" x 8"
Grout Joint - 1/2"



UT-3 / Border Brick / Brick - 3 1/2" x 8"
Grout - 1/2" /
Approx. 672 Lineal ft. of Bricks in 500 sq. ft. Roll



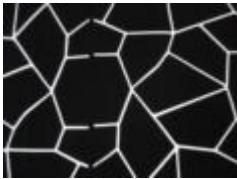
UT-4 / Basketweave / Brick - 3 3/4" x 8"
Grout Joint - 1/2"



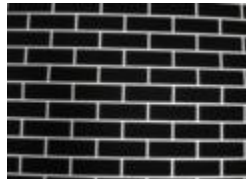
UT-5 / Herringbone / Brick - 3 1/2" x 7"
1/2" Grout Joint - 1/2"



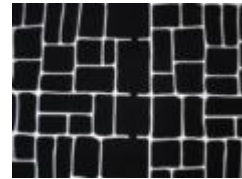
UT-6 / Fanstone / Stones - Irregular (6" x 7")
Grout Joint - Irregular (1/2")



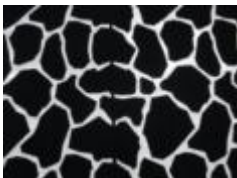
UT-7 / Flag Stone / Stones - Irregular (4" to 12" x 15")
Grout - Irregular (1/2")



UT-8 / Wall Brick / Brick - 2 1/2" x 7"
3/4" Grout - 3/8"



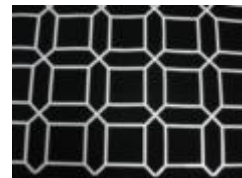
UT-9 / Ashlar Stone / Stones - Irregular (3 1/2" to 8" x 8")
Grout - Irregular (1/2" to 3/4")



UT-10 / Random Stone / Stones - Irregular (3" to 12" x 12")
Grout - Irregular (3/4" to 1 1/2")



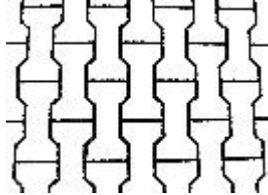
UT-11 / Palo Verde Stone / Stones - Irregular (4" to 12" x 15")
Grout - Irregular (3/8" to 1")



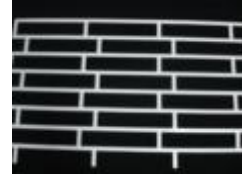
UT-12 / Mediterranean Tile / Square Tile - 6" x 6"
Border Tile - 3" x 9 1/2"
Grout Joint - 1/2"



UT-13 / 7 ft. Circle
Stones - Irregular
(4" to 6" x 9") Grout
- 1/2"



UT-14 / Paver / Paver
Stones - 4 1/2" x 9" Grout
- 3/8"



UT-15 / New York
Block / Brick - 3 5/8"
x 17 1/2" Grout - 1"
/ Sheet Size -
Approx. 3 1/4 ft. x 5
ft.



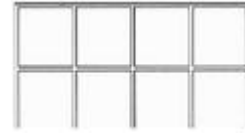
UT 16 / Lone Star /
31" - Tip to Tip / 29
1/2" - Top to Bottom
/ Available in
Adhesive



UT-17 / Circle Star /
37 1/2" - Outside
Diameter / 2" wide -
Circle Band / 33 1/2"
Diameter - Star
/Available in
Adhesive



UT-18 / No.'s 0-9
/ 15" High /
Available in
Adhesive



UT-19 / 8 x 8 Tile / Tile -
7 7/8" x 7 7/8" Grout -
1/2"